

# VeinX Infant Vein Viewer

AVI Healthcare's VeinX - Infant Vein Viewer is the smallest and most compact version, clinically proven and very successful Vein Find "LED" device.



**Bright Red focused LED**

**Streamline design**

**Adjustable Intensity**

**Separate white light torch**

**Universal USB charging**

**Easy to use**

**Effective and Portable**

## For Vein view access:

Take the stress out of finding veins in your smallest patients!

With one super bright Light Emitting Diode (LED), in one color, Superficial veins can be seen and accessed anywhere on the body.



No more guess work and no more probing.

This ingenious design helps secure the vein, provides traction on the skin, facilitating easy needle insertion.

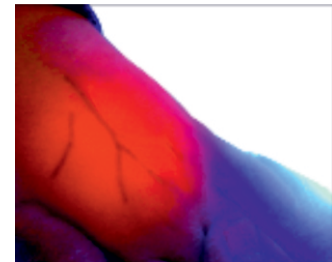
A separate white light torch for general observations.



## Trans-illumination Technology

This technique eliminates surface reflected light as the red light transmits through the skin, which makes the skin translucent to view the location of veins for Venipuncture.

Transillumination method can be used anywhere on the body. With the VeinX Infant Vein Viewer, veins can be mapped to avoid valves or bifurcations and find the best place for safe access.



Manufactured by:

\* AVI Healthcare Pvt Ltd reserves right to make changes without notice in design, specifications and models

**AVI Healthcare Pvt Ltd**  
Manufacturing Neonatal Equipments "Glocally"

**ISO 13485:2003**  
CERTIFIED COMPANY

ADDRESS: 25, Nanddeep Industrial Estate, Kondivita Lane,  
Andheri East, Mumbai - 400059, Maharashtra, India  
Telephone: +91 22 28320452/ +91 22 28326240  
Email : sales@avihealthcare.com